



# LOOKING BACK

*25th Anniversary*

## *Holiday Wreath & Chocolate Auction*

*December 7, 2018*



**MUSEUM of the  
MOUNTAIN MAN**  
Sublette County Historical Society



The Museum of the Mountain Man opened in 1990. The event was begun as a fun way to kick off the holiday season and help raise funds for the Museum's programs and events.

The first Christmas Wreath Auction was held in 1994. According to an article in the Pinedale Roundup, they were "decorated with everything from dog biscuits and wooden fish to ribbons and fruit." It raised over \$1,000 for the Museum, which was used to bring rendezvous programming to Sublette County the following summer.

According to the Pinedale Roundup, "The wreath auction went over so well that museum personnel are considering making this an annual event."

And so it has. In later years a silent auction featuring chocolate delights was added to the event. It is always held on the Friday of the first weekend in December.

2018 marks the 25th anniversary of the Holiday Wreath & Chocolate Auction. The Museum of the Mountain Man and Sublette County Historical Society thank everyone who donated wreaths, the buyers, and all the sponsors who have helped support the event for the past 25 years!

## Museum of the Mountain Man holds Christmas wreath auction

With the holiday season kicking into gear, several area businesses and organizations are taking the opportunity to spread some holiday cheer.

Last weekend, for the first time ever, the Museum of the Mountain Man hosted a wreath auction, and found out just how creative Sublette County crafters can be.

Saturday's auction saw the creation and donation of 27 holiday wreaths, decorated with everything from dog biscuits and wooden fish to ribbons and fruit.

Museum Business Manager Vivian Coates said over 100 people attended the fest, raising over \$1,000 for the museum, which will be used to bring rendezvous programming to Sublette County next summer. The museum also offers "cabin fever" classes each month beginning in January and will present a series of children's programs next summer.

The wreath auction went over so well that museum personnel are considering making this an annual event. Thanks to the following businesses, organizations and individuals who donated wreaths to the 1994 auction:

"Dog-Gone" Holidays by Animal Clinic of Pinedale; Wyoming Treasures by Window on the Winds; For

Man's Best Friend by Pinedale Feed Store; Dream Catcher by Beads, Buckskins, Buttons and Bones; Apples and Ribbon by Rio Verde Engineering; Holiday Village by Allen Agency Real Estate; Christmas Spice by Window on the Winds; Holiday Portraits by



the Learning Center, sponsored by Bartley and Rose Skinner; Snowflake Threads by members of the Fiber Guild; Needlework Treasures by members of the Fiber Guild; Golden Angel by Betty Kerback; Wyoming Pine by Pole Creek Ranch B&B; Blue Fantasy by Pa-Jo's Gallery; Winter Sage by APARTs; Christmas Ornaments & Sage by Moose Creek; Holiday Fruit & Ribbons by Wrangler Cafe; Horse-Shoes and Pines by Wyoming Rivers and Trails; Spirit Trails by Julie Early and The Pony Dancers; Holiday Traditions by Bednobs & Broomstix; Holiday Forest by Logcrafters; Fishin' For Santa by the Great Outdoor Shop; School Time by Sublette County Home-Schoolers; Christmas Jewels by The Aspen Grove; Pinecone Blossoms by Rendezvous Travel Service; Poinsettias & Evergreen Boughs by Christmann Phillips Oil; Christmas Friends by Pinedale Preschool, sponsored by High Mountain Real Estate; and Christmas Fun by Headstart Program, sponsored by Kathryn Bartel.



**Wreaths on Display  
Thurs., Dec. 1**

**through**

**Sat., Dec. 3**

**Final Bids: Dec. 3 at 7pm**



**HOLIDAY  
RECEPTION**

**Saturday, Dec. 3**

**5 - 8pm**

**at the Museum**

Admission is free for members.

Non-members: \$3.00

**Museum of the  
Mountain Man**

**307-367-4101**

**Fremont Lake Road/P.O. Box 909  
Pinedale, Wyoming 82941**

**Crowds  
festive  
Below:**

# 1994

**The first Christmas Wreath Auction** was held at the Museum of the Mountain Man on Saturday, December 3, 1994.

That year, 27 holiday wreaths were donated. Wreaths were on display at the Museum from Thursday through Saturday and bids were taken by silent auction.

Admission was free for members of the Sublette County Historical Society. Non-members \$3.00. Over 100 people attended.

The event raised over \$1,000 for the Museum, which was used to bring rendezvous programming to Sublette County the following summer.



sponsored by  
Museum of the  
Mountain Man  
and  
Sublette County  
Historical Society  
December, 1994

**We Sincerely  
Thank the Following  
for the Wreaths:**

- "DOG-GONE" HOLIDAYS**  
Donor: Animal Clinic of Pinedale
- WYOMING TREASURES**  
Donor: Window on the Winds
- FOR MAN'S BEST FRIEND**  
Donor: Pinedale Feed Store
- DREAM CATCHER**  
Donor: Beads, Buckskins, Buntos & Bones
- APPLES & RIBBON**  
Donor: Rio Verde Engineering
- HOLIDAY VILLAGE**  
Donor: Allen Agency Real Estate
- CHRISTMAS SPICE**  
Donor: Window on the Winds
- HOLIDAY PORTRAITS**  
Donor: Learning Center and Rose & Bentley Skinner
- SNOWFLAKE THREADS**  
Donor: Members of the Fiber Guild
- NEEDLEWORK TREASURES**  
Donor: Members of the Fiber Guild
- GOLDEN ANGEL**  
Donor: Betty Kerback
- WYOMING PINE**  
Donor: Pine Creek Ranch Bldg
- BLUE FANTASY**  
Donor: Pa Jo's Gallery
- WINTER SAGE**  
Donor: AP Arts
- CHRISTMAS ORNAMENTS & SAGE**  
Donor: Moose Creek Trading Co.
- HOLIDAY FRUIT & RIBBONS**  
Donor: Wrangler Cafe
- HORSE SHOES & PINES**  
Donor: Wyoming Rivers & Trails
- SPIRIT TRAILS**  
Donor: Julie Early & The Pony Dancers
- HOLIDAY TRADITIONS**  
Donor: Bebebs & Broccotux
- HOLIDAY FOREST**  
Donor: Logcrafters
- FISHIN' FOR SANTA**  
Donor: Great Outdoor Shop
- SCHOOL TIME**  
Donor: Sublette County Home-Schoolers
- CHRISTMAS JEWELS**  
Donor: The Aspen Grove
- PINECONE BLOSSOMS**  
Donor: Rendezvous Travel Service
- POINSETTIAS & EVERGREEN BOUGHS**  
Donor: Christmann Phillips Oil
- CHRISTMAS FRIENDS**  
Donor: Pinedale Preschool & High Mtn. Real Estate
- CHRISTMAS FUN**  
Donor: Headgear Program & Kathryn Barel

Thanks also to Pinedale Social Club,  
Pacific Power and to those who  
participated in the wreath auction.  
Happy Holidays to one and all!

**LO  
CL  
SE**  
No J  
Don  
over  
Call  
a cl  
Speci  
ho  
bu  
**36**

**WA  
ALL**  
**1995**  
**ON**  
**N**  
**ONLY**  
Con  
To

If yo  
Pine  
for y  
fres  
**OPEN**  
**8 am**



# 1995

The 2nd Annual Wreath Auction and Christmas Party was held on Saturday, December 2, 1995 at the Museum. The event featured almost twice as many wreaths as the previous year and raised twice as much money. Wreaths were sold by silent auction and went from \$10-\$96, according to Museum Director Laurie Latta. The Pinedale Fine Arts Council designed the wreath that went for the highest price.



## Museum of the Mountain Man

**REMEMBER THE 2ND ANNUAL  
WREATH AUCTION AND  
CHRISTMAS PARTY!**

Gift Shop open Fri. & Sat.  
10 am to 4 pm, Nov. 24 to Dec. 23

*We are closed for the winter season, but we'd love to have  
you and your families stop and see us. Appointments for  
gallery tours can be made by calling 307-367-4101*

*Office hours: 9 am - 4:00 pm. Closed 12 - 1 pm for lunch.*



**SAT., DEC. 2  
5 to 8 PM**

Admission \$3 or free to members of the  
Sublette County Historical Society

Pinedale Roundup, Thursday, December 7, 1995, Page 3

## Museum of the Mountain Man raises Christmas spirits, funds

By Jodi Rhine  
STAFF REPORTER

Museum of the Mountain Man kicked off the holiday season with its annual wreath auction Saturday night.

This year's auction featured almost twice as many wreaths as last year, and raised twice as much money as well.

Museum Director Laurie Latta said she was pleased with the way the auction went.

"I think it went really well," Latta said.

The auction featured 47 donated wreaths, with each bringing in between \$10 and \$96.

"It was nice to have such a range," Latta said.

"I think it made it affordable for everybody."

Some crafters decided to deviate from the traditional wreath look. Maggie Miller donated a wreath made of bright red peppers, and

Logcrafters skipped the wreath altogether and donated a log cabin bird feeder instead.

Latta said she appreciated the variety of wreaths available. "I think people really like to have different things to bid on."

While the auction yielded plenty of funds from each wreath, the Pinedale Fine Arts Council designed the wreath that went for the highest price. The medium sized wreath was decorated with gold instruments, music scores, and a beautiful ribbon, and sold for \$96.

The whole auction raised more than \$2,000, which will help provide educational programming.

Beginning with its meeting Jan. 19, Sublette County Historical Society will unveil its plans for the new year. Folk singer, songwriter and guitarist Chris Kennedy will entertain with a

medley of songs.

On Feb. 9, Dr. Michael Cassity, professor and historian, will examine the lives of three individual, but obscure, trappers who frequented this area in three different time periods. His lecture-slide program is free to the public.

March 15 will bring a celebration of National Women's History Month, with a program on the first white women who crossed South Pass and traveled through this area, given by Stan McKee as a living history presentation. In April, Ann Noble, local author and historian, will present the story of Heart Mountain, Wyoming, which was home to 11,000 people of Japanese ancestry during WWII.

For questions regarding the upcoming programming, or information, contact the Museum of the Mountain Man at 367-4101.



Em Ellis and Erica David enjoy the wreath auction enchantment.





# Museum of the Mountain Man

## THANKS TO THE 1995 WREATH AUCTION DONORS:

True Value Hardware	Pinedale Quilt Guild
Cowboy Shop	Sundance Motel and Gift Shop
Wyoming Rivers & Trails	2-Better-U Homemakers Club
PaJo's Gallery	Eileen Dockham
Pole Creek Bed & Breakfast	LDS Relief Society
Ron and Bobby Brown	Laurie Webb
McGregor's Pub	Mountain High Photo
Leslie Rozier	Jim and Maggie Miller
Faler's Gift Shop, Floral Shop, and Sportsman's Dept.	Julie Early
Pinedale Fine Arts Council	Miriam Carlson
Logcrafters of Pinedale	Pinedale Feed Store
Beads, Buckskins, Buttons and Bones	Pinedale Fiber Guild
Pinedale Social Club	Kathy Brown
The Learning Center	Rio Verde Engineering
Log Cabin Beauty and Barber Shop	J&D Sports Emporium
Betty Kerback	Pinedale Preschool
Window on the Winds Bed & Breakfast	Moose Creek Trading Co.
Pinedale Animal Clinic	NOLS
Pinedale Properties	Pinedale Roundup
Great Outdoor Shop	Head Start
	High Mountain Real Estate
	Rendezvous Travel
	Lollypop Cleaning Service

Thanks, too, to everyone who attended and participated in the auction. We look forward with great anticipation to the 1996 Silent Wreath Auction.



# MERRY CHRISTMAS!





# 1996

Page 8, Pinedale Roundup, Thursday, November 28, 1996

Pinedale Roundup

## COMMUNITY page

### Annual wreath auction scheduled at Museum of the Mountain Man



Director Laurie Latta and Curator Kathleen Brown take a break from their decorating activities at the Museum of the Mountain Man.

The third annual wreath auction will take place on Friday, Dec. 6, beginning at 5 p.m. at the Museum of the Mountain Man. Wreaths will be

p.m. Moms and dads are encouraged to bring their cameras.

Admission to the wreath auction is \$3 per

person. Members of the Sublette County Historical Society will be admitted at no charge. A can of food for the Pinedale Food Basket will be "charged" for visits to Santa and to the snowplane exhibit, which opens Friday, Nov. 29 at 10 a.m. in conjunction with the holiday Museum Mart.

Tickets on several raffle items will be available for purchase at the auction. Delightful appetizers from Sue's Bread Box will offer a delicious introduction to holiday eating!

The Mocroft snowplane will also give guests an opportunity to view a special mode of transportation popular in early Sublette County history.

The museum staff is also anxiously awaiting the arrival of Santa Claus, who is slated to arrive on Friday, Dec. 13, from 10 a.m. to 4

### Corrections

In the Nov. 14 issue of the *Roundup* the band that played at Vickie Higgins' benefit was incorrectly listed as Shelley and Kelly. The band was Legend.

In the Nov. 7 issue a headline on the Pinedale community page stated "Preschool is now its own agency." The preschool has been a private non-profit organization for 20 years, the investment was made to Wyoming Community Foundation as a place to invest endowment monies.

The *Roundup* regrets the errors.



## Museum of the Mountain Man

THIRD ANNUAL WREATH AUCTION AND HOLIDAY RECEPTION

Friday, Dec. 6 • 5 p.m. at the Museum

\$3 per person

Members of the Sublette County Historical Society FREE

**The 3rd Annual Wreath Auction and Holiday Reception** was held on Friday, December 6, 1996 at the Museum. 43 wreaths were donated, and sold from \$40 to \$175, raising more than \$2,100.

Wreaths were for sale by silent auction. Tickets were also available for raffle items. Santa Claus made an appearance earlier in the day for youngsters. Some kids sold bags of coal as a fundraiser for the Museum's summer programs. Sue's Bread Box prepared the appetizers.

Admission was free to historical society members, \$3 for non-members.

Museum Director was Laurie Latta. Curator was Kathleen Brown.

The Museum of the Mountain Man's annual wreath auction drew a large crowd and raised more than \$2,100.

Executive director of the museum Laurie Latta said more than 170 people attended the event – a significant increase from last year.

"That's lots more folks than last year," Latta said. "We're tickled pink about it. We loved it."

Wreaths were hand-made and donated by local artists, citizens and businesses and then auctioned off in a silent auction. Latta said the average cost of a wreath was around \$40.

"The wreaths at the top end of the scale went for about \$175," Latta said. "That top end is also a lot higher than last year."

Forty-three wreaths decorated the museum's walls. Wreaths followed different holiday themes, displaying something for everyone.

Latta said several new items were added to the event this year.

"Several kids sold bags of coal as a fundraiser for the museum's summer programs for kids," Latta said. "We awarded door prizes this year. You just had to register at the front desk and we periodically drew for wild grass wreaths made by Kathy Brown."

Joe and Vickie DeGrazio donated a bottle of aged liquor to the museum which was raffled off to help raise funds.

As always, Latta said funds collected from the event will be used to support museum programs, such as the cabin fever series held later in the winter.

"We're delighted with the turnout," Latta said. "We'd like to thank everyone who donated time to do a wreath and to those who came to the event."

On Saturday, the first Pinedale Christmas Parade cruised through town and delighted residents.

"I've heard only great remarks about it," said Kathy Geyer, event coordinator. "Everyone who was in the parade was excited about it. A lot of response has been to definitely do it again next year."

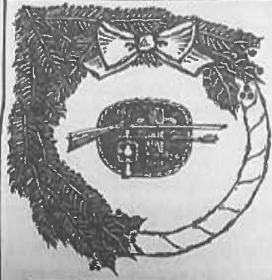
Geyer said plans are already being made to have next year's parade follow a theme.

"It'll be based on 'The Twelve Days of Christmas,' to be more geared to the holidays," Geyer said. "We're going to check into school schedules so we don't conflict with a lot of other events. We'd also like to have it at night and have a lighted parade."

This year's parade included some clever entries that were rewarded for their efforts.

The Forest Service won Best Overall Float with Smokey the Bear. Noble Construction tickled the judges' funny bones





## Museum of the Mountain Man

### Fourth Annual Wreath Auction and Holiday Reception Friday, Dec. 5 5 p.m.

- Silent Auction for Wreaths  
1st section for bids closes 6:30 p.m.  
Final section for bids closes at 7 p.m.
- Live Auction by Roger Anderson
- Door Prizes – Raffle

\$3 Admission for non-members  
FREE for members of the Sublette County Historical Society

**Bring a donation for the Food Bank:  
Visit Santa Friday, Dec. 5  
10 a.m. - Noon and 1 - 5 p.m.**

## Adorning Auction

*Wreath auction raises funds for the Museum of the Mountain Man*

Story by Greg Beebe • Photos by David Vaughan

Before Santa had time to harness up his team of reindeer and hit his next destination, most of Pinedale snatched into the Museum of the Mountain Man for the annual wreath auction Sunday last Friday.

Sixty wreaths and ornaments covered the walls amid the museum's artifacts, artwork, and St. Nick's throne. With the gallery packed like Faler's on Thursdays and a festive milieu permeating the room, locals came together for a combination of fundraising and merry-making.

The droves of benefactors pursued the holiday display, silently writing their bids under the ornamental items that had been donated by individuals and businesses. Bidders feasted on a buffet fit for royalty, complete with hot buttered rum and chestnuts roasting on a sterno fire.

The creative array was as Wyoming as it was Christmas. Andlers, barbed wire and sagebrush were as abundant as pine, holly and the traditional red and green. After a few hours of socializing and silent bidding, the new addition to this year's event, the bibble-babble of auctioneer Roger Anderson, enlivened the venue with a live section of the auction.

The nine wreaths that Anderson auctioned sold for prices ranging from \$50 to \$350 for one wreath.

Julie Early's sagebrush and ceramic wreath took the top bid and helped to elevated the fundraising above last year's earnings.

Laurie Latta, museum director, said attendance was also up from last year and the museum employees "were as happy as clams," with the turnout.



Dorothy Noble, with the help of Santa, announces the winner of the Peggy Knight limited edition print: Charlotte Martin.

Museum Director Laurie Latta holds the first wreath of the night up for auction, Betsy Greenwood's "White Christmas." The wreath sells for \$80.

The 4th Annual Wreath Auction and Holiday Reception was held on Friday, December 5, 1997 at the Museum. There was both a silent and a live auction for wreaths. Sixty wreaths were donated and displayed at the Museum. Roger Anderson was the auctioneer for the live auction of nine wreaths, which sold from \$50 to \$350. Julie Early's sagebrush and ceramic wreath took the top bid. Earlier in the day, Santa came for the youngsters with admission being a donation to the Food Bank. Admission to the Wreath Auction was free to historical society members, \$3 for non-members. Laurie Latta was Museum Director.

# 1998

**The 5th Annual Wreath Auction and Holiday Reception** was held on Friday, December 4, 1998 at the Museum. It featured a traditional silent auction for wreaths and a live auction by Roger Anderson. Admission was again charged. The highest bid was from Karla Holloway, who bid \$500 for a wreath entitled "Mountain Man" created by K.T. RainWater of Big Piney. The event raised more than \$3,000 for the Museum. Museum Director was Laurie Latta and Business Manager was Millie Pape.

Page 10, Pinedale Roundup, Thursday, December 3, 1998



## Museum of the Mountain Man

**Fifth Annual  
Wreath Auction  
and Holiday Reception  
Friday, Dec. 4  
5 p.m.**

- Traditional Silent Auction for Wreaths
- Live auction by Roger Anderson
- Door Prizes • Great Food
- Cash Bar • Raffle

\$3 admission for non-members  
FREE for members of the Sublette County Historical Society

**Donations for the Food Basket welcome!**

**Kids – Visit Santa!**

**Friday, Dec. 4 • 10 a.m. - 3 p.m.  
Saturday, Dec. 5 • 10 a.m. - 3 p.m.**

## Unusual wreaths help to make auction successful

Bidders vote to make  
wreath auction an annual  
event.

By YASMIN BRABAN  
ROUNDUP REPORTER

Contrary to popular belief, wreaths can come in all shapes and sizes, not just the traditional circular shape.

At the annual wreath auction at the Museum of the Mountain Man on Friday evening, an antler tree, an elaborately decorated oar and a miniature Indian canoe filled with a fragrant dried arrangement were among the 42 wreaths auctioned, raising more than \$3,000 for the museum.

The antler tree, made from deer antlers, was decorated with lights, candy canes, and was topped with a musical moose which shook himself about when you turned him on," museum Business Manager Millie Pape said.

Highest bid of the evening was from

Karla Holloway, who bid \$500 for a wreath entitled "Mountain Man" created by K.T. RainWater of Big Piney. The wreath resembled a shield and was decorated with natural materials including a gray rabbit pelt, a mottled tobacco gourd of muted yellow and gray, blue felted wool, and simulated owl and hawk feathers. Smaller feathers, beads and botanicals completed the wreath.

Holloway said, "I wanted the wreath because my office contains a lot of Indian artwork and this was so beautiful, it has to be seen to be believed."

Spurred on by opposing bidder Rod Matthews, Holloway said she would have continued to bid higher to possess the wreath.

"Rod Matthews and I were bound and determined to outbid each other, we were both fighting for it. It was a really exciting time," she said.

More than 150 people flocked to the auction, which is the fifth the museum has held, and by popular demand, will be an annual feature.

Museum Director Laurie Latta said: "We've been debating whether the auction should be an annual event, so we held an exit poll after the auction, and the overwhelming response was to keep the auction every year."

"I would like to thank everyone who created or purchased a wreath this year. The auction is one of our favorite yearly events. Plans are already underway for the 1999 auction, including judging for the best of show, and a "People's Choice" award," Latta said.

William Sublette, the cuddly bear created to commemorate Sublette County's 75th anniversary, was won by Michael Ferrin of Lyman in the draw held at the auction.



AutoCare  
Printer





## Museum of the Mountain Man

### **Sixth Annual Wreath Auction & Holiday Reception**

**Friday, Dec. 3 • 6 p.m.**

**New Location! Old Sublette  
County Library!**

- Traditional Silent Auction for Wreaths • Live Auction by Roger Anderson
- Great Food • Cash Bar
- Raffle

**\$3 admission for non-members**

**FREE for members of the Sublette County Historical Society**

# 1999

The 6th Annual Wreath Auction and Holiday Reception was held on Friday, December 3 at the Museum. It featured a traditional silent auction for wreaths and a live auction by Roger Anderson. Jo Crandall provided the refreshments for the evening. Admission was again charged for non-members. Museum Director was Laurie Latta. The 1999 Wreath Auction raised more than \$4,000 for the Museum.

Thursday, December 9, 1999 • Pinedale Roundup • Page 3



This year's most expensive wreath auctioned off at the annual Museum of the Mountain Man wreath auction was purchased by Callaghan, Cabinets and Lynn and Chopper Grissell. Representatives of Callaghan's who sit proudly by the Julie Early-created wreath are: Will Grissell, Corey Patterson, Caroline Grissell, Megan Grissell, Graeham Gilin, Tyler Middleton, Josie Middleton and Victoria Gilin.

David Muehlen Photo



## Wealth of Wreaths

*Annual Museum of the Mountain Man Wreath Auction exceeds expectations*

Museum of the Mountain Man director Laurie Latta said she was well pleased with the turnout and outcome of the museum's annual fundraiser. Latta said that the wreath earnings exceeded \$4,000, which was the highest amount ever raised. The total proceeds for the evening topped the \$5,000 mark, making it a very successful evening, according to Latta. The Sublette County Historical Society extends a big thank you to Jo Crandall for the delectable delights she provided for the night, and to Roger Anderson for the auctioneering. Also, thanks go out to George Shauli and Phyllis Klein for serving as bar-tenders, Elin Ellis for modeling the Plains Indian dress, Karla Holloway and Donna Levin for handling the sales, and to all the wreath donors and purchasers.

It wasn't the most expensive wreath sold at this year's wreath auction but it was the largest. The father and son team of Chris and Dee Thornhill load the \$200 wreath created by the Pinedale Preschool that Chris and his wife purchased.

David Muehlen Photo

# 2000



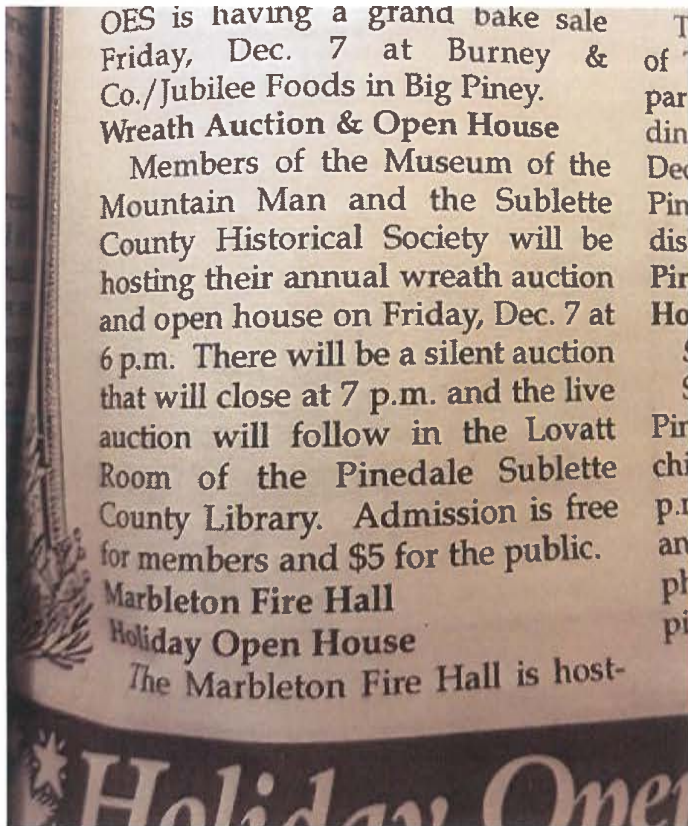
The 7th Annual Wreath Auction and Holiday Reception was held on Friday, December 1. The Wreath Auction moved to a new location this year, to the Sublette Center. There was a silent and a live auction. Roger Anderson again served as auctioneer. Admission was raised to \$5 for non-members. Museum Director was Laurie Latta.



The 2000 Wreath Auction raised more than \$5,000 for the Museum. The highest wreath price paid was \$460. The new "People's Choice Award" went to one of Julie Early's wreaths.



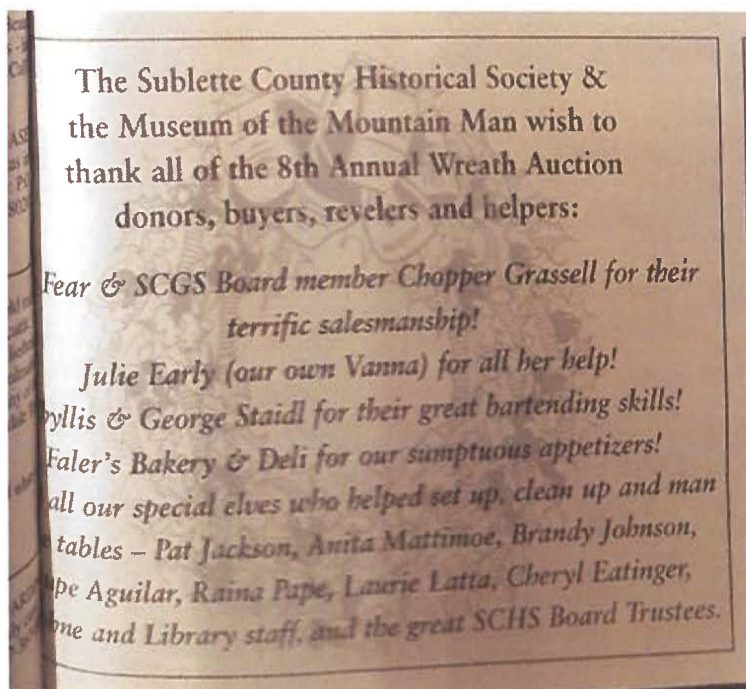
# 2001



The 8th Annual Wreath Auction and Holiday Reception was held on Friday, December 7. The Wreath Auction again moved to a larger location, the Lovatt Room in the Pinedale Library. Auctioneer was Jay Fear. Faler's Bakery & Deli provided the appetizers. Admission was raised to \$5 for non-members. Museum Director was Laurie Latta. Business Director was Millie Pape.

The "People's Choice" awards was tied between Michelle Pape and Bob Bing.

Highest selling wreaths were one from K.T. Rainwater and one from Julie Early, which went for \$350 each. About \$3,000 was raised for the Museum in the event.





## WREATH AUCTION



Michelle Crail photo

**Above, L to R: Chopper Grassell, Jay Fear and Julie Early at the Wreath Auction last Friday.**

The annual Museum of the Mountain Man Wreath Auction displayed many beautiful works of art last Friday night at the Pinedale Library. The Museum wouldn't disclose the amount of the money raised during the event. Mildred Pape, business manager, did say that they met the budgeted goal.

Michelle Pape and her gorgeous live greenery holiday swag and Bob Bing with his rustic cowboy Christmas tree tied for the People's Choice Award Wreath.

K. T. Rainwater crafted an enchanting native American shield and Julie Early created a tremendous sage wreath featuring an Indian maiden decoration and dreamcatcher. These were the highest selling wreaths at the auction, each went for an incredible \$350 each. ■

- Michele Crail



# 2002

THURSDAY, DECEMBER 12, 2002 • SUILLETTE EXAMINER • PAGE 15

## Wreaths of every shape & size

*Delsa Allen photos*

Below: The audience's response to her singing debut of Rudolf the Red Nose Reindeer put a smile on Devan Lamere's face as dad Cleto sits by for support.



Museum of the Mountain Man board member auctioneer for the evening, Jay Fear keeps the bidding as shown in a reflection from one of the non-traditional wreaths. This one was donated by Willow Creek Framing.

Doug and Leanne Relstab enjoy getting into the holiday spirit at the museum's ninth annual wreath auction at the Pinedale Entertainment Center.



Janet L. Montgomery visits with Stuart McKinley after getting her wreath. Thirty-four wreaths were auctioned off at a rapid pace, going for \$20 to \$825. The high-priced wreath was made from an old pitchfork and was donated by the McKenzie Meninella Foundation.



**The 9th Annual Wreath Auction and Holiday Reception** was held on Friday, December 6, 2002. This year the Wreath Auction was held in the Pinedale Entertainment Center. Auctioneer was Jay Fear, who was also a board member on the Sublette County Historical Society. Wreaths went for from \$25 to \$825, with the average wreath selling for \$145.

The event was sponsored by The Bank of Pinedale and became free to the public this year. Appetizers were provided by Faler's.

Museum Director Laurie Latta said more than \$3,000 was raised.

**WREATH AUCTION**



Nannette Latchford stands next to her new wreath. Paul and Betty Hagenstein had purchased the wreath earlier that evening and donated it back to the museum, who auctioned it off to Nannette the second time around.


Over 75 people showed up last Friday for the Museum of the Mountain Man's annual Wreath Auction fundraiser. The auction was in the meeting room of the Entertainment Center, and drinks and refreshments were served.

The festivities started when Devan Lamere sang *Rudolph the Red Nosed Reindeer*. The auction started right afterwards with auctioneer Jay Fear and his helper, Julie Early. There were all different types of wreaths to choose from, including one with fruits, one made out of paper, and several regular pine wreaths. The highest bid was for \$825 on the Old Time Christmas Wreath.

Although the final numbers were not tallied up by press time, Laurie Latta, said that the Museum made more than the \$3,000 that they had made last year. Individual wreaths sold for anywhere between \$25 and \$825. The average wreath sold for \$145. ■

- Kim Broking

**Deputy, continued** will be open for public review, including the name of the deputy. The case will be bound over to district court following a




*Special Touch at Christmastime*

**Ninth Annual Wreath Auction and Holiday Reception**  
Friday, December 6 at 6 p.m.

**NEW LOCATION**  
Pinedale Entertainment Center Meeting Room  
FREE to the Public!


- Traditional Silent Auction for Wreaths
- Great Food
- Live Auction by Jay Fear

Sponsored by The Bank of Pinedale



**Museum of the Mountain Man**  
700 E. Hennick • Pinedale • 367-4101


*Thank you*



The Sublette County Historical Society & the Museum of the Mountain Man wish to thank all of those involved in making the Ninth Annual Wreath Auction a success:

- All those individuals, businesses and sponsors who donated wreaths
- Bill & Sherri Kellen, Pinedale Entertainment Center
- Bank of Pinedale, our sponsors
- Jay Fear, our auctioneer and his helper, Julie Early
- Faler's

And all our special elves: George and Phylis Staidl, Pat Jackson, Ridge Larson, Ruth Giebel, Millie Pape, Dianne Boroff, Patti Ellis, Tim and Karla Holloway, Bernie Holz, Ron Wilson, Elaine Ullery, Fred, Michelle, Sidney and Logan Pape.



The Museum of the Mountain Man  
367-4101



2003

Pinedale Roundup, December 11, 2003, Page 21A

# WREATH AUCTION



**Top:** Craig Ritschel and Barbara Pope take a look around the Pinedale Entertainment Center last Friday during the annual Wreath and Chocolate Auction. The auction was sponsored by the Museum of the Mountain Man, Bill and Sherri Kellen, and the Bank of Pinedale. All winning bids that night went to the Museum. Money collected roughly counted \$6,000.

**Center:** Laurie Hartwig, Director for the Museum of the Mountain Man, shows off a wreath donated by EnCana. Other wreaths were donated by local merchants as well as residents.

**Bottom:** Jay Fear was the auctioneer and impromptu funny man as he worked the crowd for higher bids. Residents who attend could munch on appetizers and whet their whistle at an open bar.



photos by Jeannette Bisel

**The 10th Annual Wreath & Chocolate Auction** was held on Friday, December 5, 2003 at the Pinedale Entertainment Center. Jay Fear was auctioneer. The event was sponsored by the Bank of Pinedale and Bill & Sherri Kellen.

More than 35 wreaths were donated. The "People's Choice" award went to the Cowboy Shop for their wreath, "Boots n' Wire." The event raised over \$6,000 for the Museum.



10<sup>TH</sup> ANNUAL  
**Wreath & Chocolate Auction**



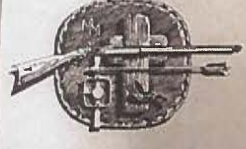
Friday, Dec. 5  
6 p.m.  
Pinedale  
Entertainment Center  
Meeting Room  
**FREE to the public!**

*Featuring . . .*  
Great Food • Traditional  
Silent Auction for Wreaths  
& Live Auction by Jay Fear

**SPONSORED BY:**  
The Bank of Pinedale • Bill & Sherri Kellen  
The Museum of the Mountain Man - 367-4101

**THANK YOU**

**FROM THE SUBLETTE COUNTY  
HISTORICAL SOCIETY AND MUSEUM OF  
THE MOUNTAIN MAN**



We wish to thank those individuals, organizations and businesses who donated or purchased wreaths and chocolate!

**A special thank you to our sponsors:** Bill & Sherri Kellen, and the Bank of Pinedale

**Auctioneer:** Jay Fear

**And all our special elves.....**George & Phyllis Staidl, Pat Jackson, Dave Lankford, Millie Pape, Patti Ellis, Karla Holloway, Bernie Holz, Mike Irwin, Fred Pape, and Ron Wilson



# 2004

THURSDAY, DECEMBER 9, 2004 • SUILETTE EXAMINER • PAGE 21

## ERT A wreath fit for every home



Above: A move to the Rendezvous Pointe Senior Center for the Museum of the Mountain Man's annual Wreath and Chocolate Auction may have helped make this year's event such a success.



Left: Fifteen chocolate desserts were donated for a silent auction along with a couple of wreaths.

Right: High Mountain Real Estate donated this unique elk horn wreath, which received quite a bit of attention. The wreath received a number of people's choice stars along with many other favorites. The top favorite this year was the "Grand Star" wreath donated by Laurie Lamere.

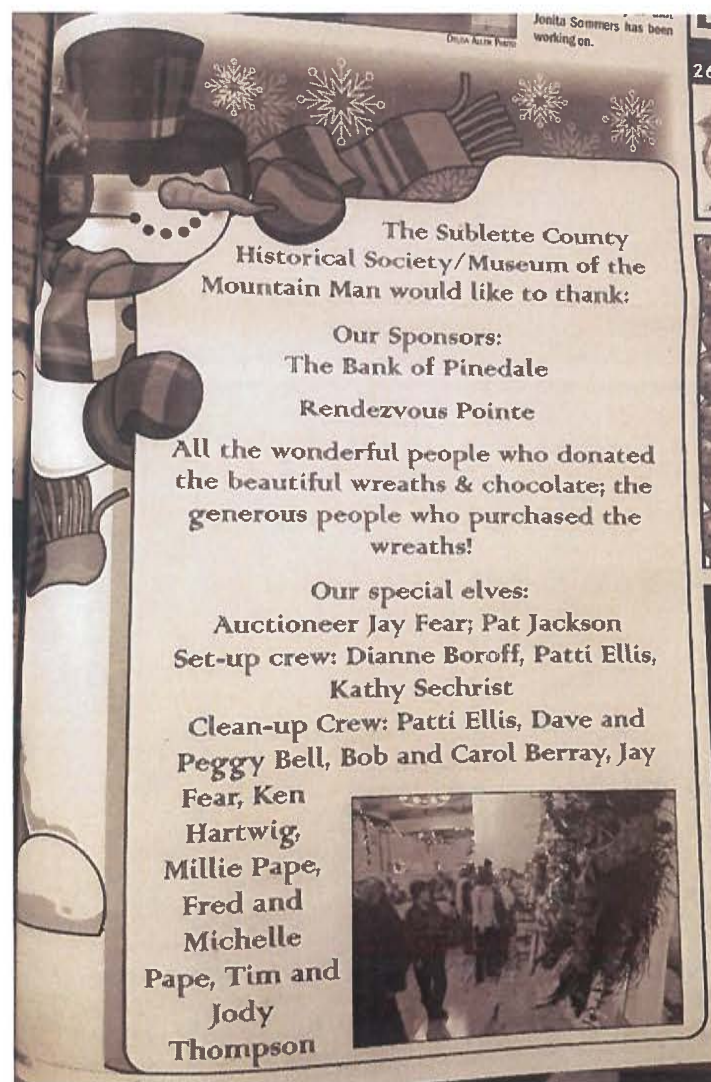


Left: Auctioneer Jay Fear keeps the bids coming. The event raised \$7,200 for the museum.

Far Left: Rendezvous Pointe was jam-packed last Friday with more than 200 people who came to the event to see the 36 locally created wreaths and Christmas arrangements.

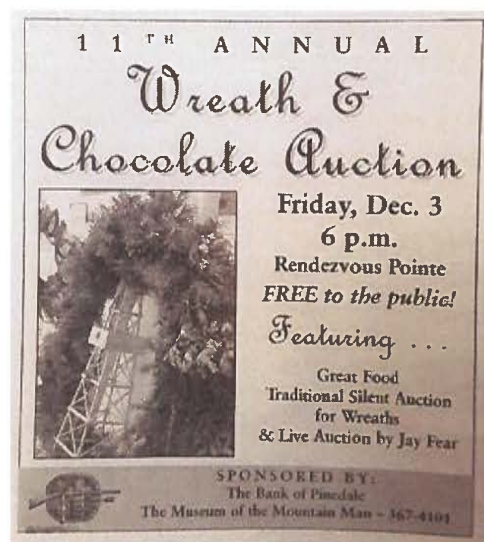
*Delsa Allen Photos*





**The 11th Annual Wreath & Chocolate Auction** was held on Friday, December 3, 2004 at Rendezvous Pointe in Pinedale. There was a silent and live auction for wreaths. Jay Fear and Pat Jackson were auctioneers. The event was sponsored by the Bank of Pinedale, and was free to the public.

More than 36 wreaths were created by local craftspersons and donated for the fundraising event. Over 200 people attended the function. One of the wreaths went for as much as \$1,400. The "People's Choice" award went to Laurie Lamere for her wreath called "Grand Star." The event raised \$7,200 for the Museum.





# 2005

*A Special  
Touch At  
Christmastime*

**12th Annual Wreath &  
Chocolate Auction**

**Friday, Dec. 2 • 6 p.m.**

**Rendezvous Pointe**

**FREE to the Public!**

**Featuring:**  
Great Food, Wreaths and Chocolate  
Live Auction by Jay Fear

Sponsored by: The Bank of Pinedale  
& Museum of the Mountain Man.  
Any questions call 367-4101




Page 18 • SUBLETTE EXAMINER • THURSDAY, DECEMBER 8, 2005



Tin Thompson holds a wreath for auctioneer Jay Fear; the event raised \$6,100 for the Museum of the Mountain Man.

*Auctioning Art*

The 12th annual Wreath & Chocolate Auction was held Friday, Dec. 2, at Rendezvous Pointe Senior Center.

The Children's Discovery Center had a gingerbread house wreath, the biggest wreath of all. It was a favorite among the children.



Don McCallister Photo



Museum of the Mountain Man Director Laurie Hartwig holds up a wreath made of wine bottle corks donated by the Museum of the Mountain Man.



Cynda LeChaine thought outside the box this year donating this colorful, bright chair as part of the Brothers Big Sisters of Sublette County.

The attendees were given a star sticker to place on their favorite wreath. The people's choice award went to the Sage and Snow Garden Club.


## THANK YOU

**To our sponsors:** Mr. Jeff Patterson & Bank of Pinedale  
**To our host:** Rendezvous Pointe & Staff  
**To our special elves:** Pat Jackson, Annette Pape, Millie Pape, Jay Fear and Clint Gilchrist  
**To our auctioneer:** Jay Fear  
**To our clean up crew:** Jay Fear, Clint Gilchrist, Ken Hartwig, Billy & Annette Pape, Millie Pape, Fred & Michelle Pape  
**To our wreath donors:**

Allen Agency	The McKenzie Foundation
Barn Door	Annette Pape
Julie Belton, Child Care	Pinedale Preschool
Julie Belton, Pinedale Chargerz	Lenore Percy
Cowboy Shop	Rendezvous Travel
Davidson Family	Rendezvous Pointe
Juli Early	Rio Verde Engineering
Faler's	S.A.F.V. Task Force
Ann Fear	Sage n' Snow Garden Club
Ann Fear Appraisals	Shell Oil Company
The Grand Basket	Sherry Davidson Snyder
Green River Land Trust	Tracy Steele
Green River Valley Museum	Sublette Center
High Mountain Real Estate	Sublette County
Juli James	Sheriff's Dept.
Betty Kerback	Walt's Plumbing
Lamere Concrete	Wolf Dodge
The Learning Center	

**And to Everyone who  
Purchased Wreaths**

The Sublette County Historical Society  
/ Museum of the Mountain Man



**The 12th Annual Wreath & Chocolate Auction** was held on Friday, December 2, 2005 at Rendezvous Pointe in Pinedale. There was a silent and live auction for wreaths. Jay Fear and was auctioneer. The event was sponsored by the Bank of Pinedale, and was free to the public. Museum Director was Laurie Hartwig.

The "People's Choice" award went to the Sage and Snow Garden Club. The event raised \$6,100 for the Museum.





Auctioneer Jay Fear and his assistant Fred Pope (holding up the McKenzie Menzies Foundation wreath) did a great job getting the nearly 200-person crowd into bidding.



## SOLD TO THE HIGHEST BIDDER

The Thirteenth Annual Mountain Man Museum Wreath & Chocolate Auction was the best year ever with a generous public, good food and beautiful donated wreaths

Director of the Sublette County Historical Society and the Mountain Man Museum, Laurie Harburg, did an amazing job of holding the wreath auction.

Photos by Nikki Mann



This star wreath was donated by the Sage and Snow Garden Club.



Paper money, glowing chili peppers, and painted marshmallows were just a few of the amazing wreaths (and chocolate creations) donated to the 13th annual, and most successful, Wreath and Chocolate Auction.



Join us to kick off the holiday season!  
The Museum of the Mountain Man's  
Thirteenth Annual



## Wreath and Chocolate Auction

Friday, December 1st at 6 p.m.  
Holiday Reception at the Rendezvous Pointe Senior Center

Wreaths from individuals, businesses and organizations  
Will be offered for sale during the festivities

Don't forget to purchase the

Creative and decadent chocolates too!

Jay Fear will use his excellent auctioning skills to sell  
to the highest bidder.

Come and enjoy delicious hors-d'oeuvres and beverages.  
Complimentary of First Bank.

All proceeds benefit 2007 museum projects and programs.

Ad Space Donated by **QUESTAR**

dents per every 100 million VMI in 2004.  
California had 1.25 fatal accidents per every

Page 28A Pinedale Roundup December 7, 2006

about 1000 people were involved in the accident and 2-59 a.m. were alcohol related.

## 2006 Wreath Auction

Annual fund raiser for the Museum of the Mountain Man



The 13th annual wreath auction was the biggest ever thanks to generous wreath donors and buyers. We could not have hoped for a better turn out and fund raiser. About 200 people packed the Rendezvous Pointe. 33 wreaths and 22 chocolate donations were auctioned off. Big thanks to everyone who participated. All proceeds go to the Museum of the Mountain Man to help preserve our history.



### Thank You:

#### Event Sponsor

First Bank (donation covered food and refreshment costs)

#### Major Wreath Buyers

Gayle Kinnison  
Shell Rocky Mountain Production  
Escama  
Cecilia Richardson  
Allen Agency Real Estate  
Northern Tide Company

#### Wreath Buyers & Cash Donors

Ann Fear Appraisals  
Wolf Auto Group  
Noble Construction  
Barbara Bain  
Danel Snyder  
Dave Wright  
Rio Verde Engineering  
Lara Ryan  
Paul & Betty Hagenstein  
Betty Greenwood

#### Tegeler and Associates

Dixie Fratic  
Palmer & La Buda  
Cowboy Shop  
Julie James  
Maxine Leckie  
Ron Wilson  
Aronne Garnett  
Dawn Ballou  
Jackie Sell  
Jocelyn Moore  
First Bank  
Mark & Cheryl Eateringer  
Jillia Schmitt

#### Wreath & Chocolate Donors

High Mountain Real Estate  
(People's Choice)  
Sage & Snow Garden Club  
(People's Choice)  
Allen Agency Real Estate  
(People's Choice)  
Rio Verde Engineering  
R&D Group  
Ann Fear Appraisals

#### Moose Country Quilting Service

LaMere Concrete  
Jolie Early  
Green River Valley Museum  
Shell Rocky Mountain Production  
Wolf Auto Group  
Julie James  
Faler's Floral  
Tegeler and Associates  
McKenzie Menzies Foundation  
Trees on the Move - Birney Snyder  
Betty Kerback  
Northern Tide Company  
Green River Valley Land Trust  
Sublette Center  
Betty Hall  
Annette Page  
Kau Andrews - Sublette  
County Chamber  
Bottoms Up Brewery  
Fred & Michele Page  
First Bank  
Learning Center Preschool  
Melita Snow  
Mille Page

#### Andrew's Woodworking

Judy Raridon  
Children's Discovery Center

#### Organizers, Helpers, Cleaners

Laurie Hartwig  
Mille Page  
Annette & Billy Page  
Carolyn & Dave Bartlett  
Pat Jackson  
Jay Fear (auctioneer)  
Fred & Michele Page  
Charlie Legman  
James Rogers  
Janet & Randall Montgomery  
Diane Boruff  
Patty Ellis  
Julie James  
Hort Spitzer  
Clint Gilchrist  
Dawn Ballou  
Rendezvous Pointe  
Tim Kerback  
Colin Carter

The 13th Annual Wreath & Chocolate Auction was held on Friday, December 1, 2006 at Rendezvous Pointe in Pinedale. Nearly 200 people attended and 33 wreaths were donated. Jay Fear and was auctioneer. The event was sponsored by the First Bank.





2007

The Gayle Kinnison Wreath, made by Ann Fear a few years ago, has been consistently bought at the auction and donated back to be sold again. Shell Exploration and Resources bought the wreath this year for \$1,500, and will donate it back.



The Artistic Finishes Wreath sold for \$370.



People signed up for gourmet chocolate treats at the silent auction.

## Wreath and Chocolate Auction

Photos by Alecia Warren

The 14th Annual Wreath & Chocolate Auction was held on Friday, December 7, 2007 at Rendezvous Pointe in Pinedale. Jay Fear was auctioneer. The event was sponsored by First Bank. Top buyers were Shell RMP, Ultra Petroleum, Tiger & Melba Jaskolski, and Sam Lowham and DeeAnn Marshall.

THURSDAY, DECEMBER 13, 2007 • SUBLETTE EXPLORER • PAGE 21



*The Sublette County Historical Society/ Museum of the Mountain Man*  
*Would like to thank everyone for a successful Wreath and Chocolate Auction*

*Our Sponsors:*  
*Our Hosts:*  
*Our Auctioneer:*  
*Our Editors:*

*Our Top Buyers:*  
*Our Wreath Donors:*

*The Sublette County Historical Society & Museum of the Mountain Man*  
*Would like to thank everyone for a successful*

**Wreath & Chocolate Auction**

**First Bank**  
 Rendezvous Pointe  
 Jay Fear

**Donor Ballot:**  
 Denise Rowell  
 Dece Breckhauser  
 Ray Breckhauser  
 Man Rinnette  
 Sam Drucker  
 Clint Galtieri  
 Laurie Hartwig  
 Ken Hultwig  
 Pat Jackson

**Shell RMP**  
 Tiger and Melba Jaskolski

**Alieu Agency**  
 Ann Fear Appraisal  
 Artistic Finishes  
 The Barn Door  
 Big Brothers/Big Sisters  
 Mothers' Up Brewery  
 Brookline, Danne  
 Children's Discovery Center  
 One's Progress Center  
 DeGrazos  
 Faler's  
 GrandMans  
 Green River Land Trust  
 Green River Valley Museum  
 High County Counseling  
 High Mountain Real Estate  
 Julie's Children  
 Kerbeck, Bud & Betty  
 LaMere Concrete  
 Log Cabin Motel

**Charles Lopotanski**  
 Janet Montgomery  
 Annette Page  
 Billy Page  
 Fred Page  
 Michelle Page  
 Mille Page  
 Ray Page  
 Leonard Rockl

**Ultra Petroleum**  
 Sam Lowham and DeeAnn Marshall

**The McKenzie Foundation**  
 Kay Mallowiki Tree & Lawn Care  
 Noble Conservation  
 NOLA Three Peaks Ranch  
 Pape, Annette  
 Pape, Mille  
 Pato Grill  
 Pinedale Learning Center  
 Pinedale Properties  
 Rendezvous Travel  
 Ron Verne Engineering  
 Rinehart, Nancy  
 Rocky Mountain Bank  
 Sage & Snow Goshute Club  
 Schnauher, Linda  
 Sublette Center Season  
 Tegeler & Associates  
 Ultra Petroleum  
 The Gayle Kinnison Memorial



# 2008



(left to right) Announcer Jay Fear takes bids as Honis Luther and Richie Strom, brew masters from The Wind River Brewery, hold up the Gayle McMurry Kinnison Wreath. Kinnison was former owner of the pub and very active in the community. The final bid was \$2,600 by Shell, which donated it to The Wind River Brewery.

Page 20 • THURSDAY, DECEMBER 11, 2008 • SUBLETTE JOURNAL



Above: Paula Harrell (left to right), Amy Mason and Jeanne Davis show the room looking at wreaths.



Right: Clint Gilchrist looks at the assortment of wreaths at Rendezvous Pointe Friday during the annual Museum of the Mountain Man Wreath and Chocolate Auction.

## Décor & dessert

Rendezvous Pointe hosted the 15th Annual Museum of the Mountain Man (MMM) Wreath and Chocolate Auction Friday. The event raised around \$11,500 for the museum's 2009 projects and programs, according to MMM Director Laurie Harwig. 1st Bank of Pinedale provided food and beverages and Wind River Brewing Company also provided beverages. Thirty-six wreaths were donated by individuals, organizations and businesses. "It's been a successful event," Harwig said. "Christmas can be a hard time for people to open up their wallets. We're so grateful for that. We want to thank everyone for their overwhelming support. It's a great way to kick off the holiday season."

## Wreath and Chocolate Auction

Photos by Mari Muzzi

The bids for Christmas wreaths and decorations reached over \$2,000 before the evening was through during the Museum of the Mountain Man's annual Christmas Wreath and Chocolate Auction. The final bid was \$1,600.



Above: Tami Leach checks out the chocolate auction table. People wrote down their bids on the items that they wanted during the annual Christmas Wreath and Chocolate Auction.

Left: Fred Pape displays a decorative pair of snowshoes to the audience. The final bid was \$1,600.



THE PINEDALE FINE ARTS COUNCIL Presents  
Australian Storyteller  
PAUL TAYLOR



Above: Betty Rootz fills her plate with delicious food at the event.



Left: The eggs and packages of chocolate draw the attention of Leonard Rootz.

## Trey Wilkinson Photos

Right: Tables of people eating, drinking and being merry at Rendezvous Pointe. 1st Bank of Pinedale and Wind River Brewing Company provided food and drinks throughout the evening.



The 15th Annual Wreath & Chocolate Auction was held on Friday, December 5, 2008 at Rendezvous Pointe in Pinedale. Jay Fear was auctioneer. The event was sponsored by First Bank of Pinedale.

Individual wreath bids reached over \$2,000 before the evening was through and raised \$11,500 for the Museum. The Gayle McMurry Kinnison Memorial Wreath was auctioned for \$2,600. Top buyers this year were Shell RMP and Vic McMurry.

THURSDAY, DECEMBER 11, 2008 • SUBLETTE JOURNAL • PAGE 21

Thursday.

The Sublette County Historical Society/ Museum of the Mountain Man Would like to thank everyone for a successful Wreath and Chocolate Auction

**Our Sponsors:** 1st Bank of Pinedale  
**Our Hosts:** Rendezvous Pointe  
**Our Auctioneer:** Jay Fear  
**Our Masters:** Richie Strom, Honis Luther & Wind River Brewing Co.  
**Our Stew:** Dawn Ballou, Terry Cain, Jack Cain, Clint Gilchrist, Jay Fear, Ken Harwig, Emma Lee Hecox  
**Our Top Buyers:** Shell RMP, Vic McMurry

### Our Wreath Donors

Allen Agency, Ann Fear Appraisal, Big Brothers/ Big Sisters, Children's Discovery Center, FairCan USA, Dennis Trucking Co., Green River Land Trust, Green River Valley Museum, High Country Counseling, High Mountain Real Estate, Bud and Betty Kerlock, LaMere Concrete, Devon LaMere, The Learning Center, The McKenzie Foundation, NOLS Three Peaks Ranch, Office Outlet, CMT Bonds Concepts, Annette Pape, Millie Pape, Raina Pape, Pinedale Preschool, Pinedale Properties, Rendezvous Travel, Ridley's Floral Shop, Craig & Nancy Rischel, Sage & Snow Garden Club, Shell RMP, Melita Snow, Sublette Center Seniors, Sublette County Chamber of Commerce, Sublette County Library, Truett and Associates, UCC - Carol White, Wiggins Across Wyoming, Willow Creek Framing, Wind River Brewing Co., Wolf Dodge, The Gayle Kinnison Memorial Wreath

The Sublette County Historical Society & Museum of the Mountain Man Would like to thank everyone for a successful

Wreath & Chocolate Auction



# 2009



'Sweet Harmony' members Melissa Remond (left to right), Sheron Ziegler and Sue Briggs sing Christmas music before the wreath auction on Friday.

## Décor and dessert

*The Museum of the Mountain Man raised close to \$10,000 during its annual wreath and chocolate auction fundraiser on Friday night at Rendezvous Pointe in Pinedale. The Gayle Kinnison Memorial Wreath received the highest bid at \$1,200.*



Sublette County Historical Society board member Clint Gilchrist (left) and Jay Fear present the Sublette County Library wreath, made from book pages.



Jay Fear, president of the Sublette County Historical Society, takes bids during the wreath auction.

Mari Muzzi photos



QUESTAR

### Meeting Our Commitments: Preserving Air Quality

Ultra, Shell and Questar are committed to keeping you informed about our efforts in the Pinedale Air Quality Project Area (PAPA). Protecting and preserving water, air and wildlife is important to all of us.

Please join our natural resource and environmental specialists for an education series to learn about how we are delivering on our commitments and discuss the topics that are important to Sublette County.

In November, we had a discussion in Pinedale on water in the PAPA. We will host two additional "meetings" in December and January, followed by a 3-day overview on natural gas development in February. We look forward to meeting with you and answering your questions.

#### Air Quality in the PAPA

Learn about current monitoring activities, emission inventories, emission reduction technologies and efforts to reduce air VOC and HAP emissions, as well as our state emergency plans.

Tuesday, Dec. 15  
5 - 7pm  
Mountain Town Hall

Refreshments and supplies will be served.

For more information please e-mail Ultra, Shell and Questar at [pm@ultraquestar.com](mailto:pm@ultraquestar.com)

#### Upcoming Discussions

Wildlife and Recreation Issues PAPA  
Tuesday, Dec. 15  
5 - 7pm  
Pinedale Mountain Library/Forum



Page 10A Pinedale Roundup December 11, 2009

with Mayor Smith.

The Sublette County Historical Society/ Museum of the Mountain Man would like to give a big

# Thank You

for a great Wreath & Chocolate Auction Evening!

#### Our Sponsor:

First Bank of Pinedale

#### Our Hosts:

Rendezvous Pointe

#### Our Auctioneer:

Jay Fear

#### Our Meisters:

Richie Strom &  
Wind River Brewing Co.

#### Our Elves:

Dawn Bailou  
Rosemarie Brewer  
Richard Brewer  
Terri Cain  
Jack Cain  
Julie Early  
Clint Gilchrist  
Jay Fear  
Ken Hartwig  
Emma Lee Hecox

#### Elves continued

Annette Pape  
Billy Pape  
Rutha Pape  
Tim Thompson

#### Our Special Entertainers:

Sweet Harmony

#### Our Top Buyers:

Shell RMP  
EnCana USA

#### Our Wreath and Chocolate Donors:

Allen, Kathy  
Anderson, Melissa  
Ann Fear Appraisal  
Big Brothers/ Big Sisters  
Brewer, Rosemarie  
Children's Discovery Center  
Clean Wash Laundromat  
Dennis Trucking Co.  
Early, Jill  
EnCana USA  
Eversull, Sue  
Green River Valley Museum  
Health Gone Wild  
Jay Fear Real Estate  
Lakeside Lodge  
Lake Country Builders

LaMere Concrete  
Luo, Tia  
Missy and Yoda Pape  
N.O.L.S. Three Peaks Ranch  
Pape, Annette  
Pierce, Jennifer  
Pine Creek Behavioral Health  
Pinedale Preschool  
Read's Ready Mix  
Rz Pointe Ceramics  
Ridley's Floral Shop  
Sage & Snow Garden Club  
Shell RMP  
Snow, Melita - Truffles  
Strom, Richie - Christmas Tree  
Sublette Center Seniors

Sublette Communications  
Sublette County Chamber of Commerce  
Sublette County Library - Pinedale  
Tigler, Jill & Mary Lynn Worl  
Thomas, Angie  
The Gayle Kinnison Memorial Wreath  
Ultra Resources  
The McKenzie Foundation  
Wells Fargo Bank  
White Pine Ski Resort/ Mary Thompson  
Wind River Pizza & Pasta/ Costello Family





# 2010

## Wreaths raise money, holiday spirit

The theme of the 17th Annual Wreath & Chocolate Auction was to raise money for the Sublette County Historical Society/ Museum of the Mountain Man. The event was held on Friday, December 3, 2010 at Rendezvous Pointe in Pinedale. The event raised a total of \$12,285 for the Museum. The highest bid was for the Gayle McMurry Kinnison Memorial Wreath which sold for \$1,550. Top buyers were Maggie Miller, EnCana Natural Gas, Shell RMP and Ultra Resources.



A woman stands next to a large, ornate wreath.



A large, ornate wreath with a central red ornament.



A wreath with a central red ornament and a 'SOLD!' sign.



A man and a woman stand next to a large, ornate wreath.



A man speaking into a microphone.

**The 17th Annual Wreath & Chocolate Auction** was held on Friday, December 3, 2010 at Rendezvous Pointe in Pinedale. Jay Fear was auctioneer. The event was sponsored by First Bank of Pinedale. Over 50 hand-crafted wreaths were donated by local artisans for the fundraiser. The event raised \$12,285 for the Museum. The highest bid was for the Gayle McMurry Kinnison Memorial Wreath which sold for \$1,550. Top buyers were Maggie Miller, EnCana Natural Gas, Shell RMP and Ultra Resources.

## Deck the halls with... anything you can turn into a wreath

Photos by Kaitlynn McKinley

The Museum of the Mountain Man held its annual wreath and chocolate auction fundraiser at Rendezvous Pointe on Dec. 3. The museum raised a total of \$12,285 from the event, which is \$2,000 more than last year's event said museum Director Laurie Harvige. "It was very successful," Harvige said.

Fifty wreaths donated from local businesses and residents were auctioned off. The highest selling wreath was the Gayle McMurry Kinnison memorial wreath, which Timmins bought for \$1,550.

kaitlynn@pinedaleroundup.com



Clint Garbist of the Sublette County Historical Society shows off one of the 50 wreaths up for auction as well as the new SubletteOpoly — a new board game based off Monopoly.



Jay Fear, president of the Sublette County Historical Society, was the auctioneer for the event.



High Mountain Real Estate donated this creative wreath made from cowboy boots.



Along with 50 wreaths, chocolate was also auctioned off at the fundraiser.

Right: The wreaths were hung all around Rendezvous Pointe, which enabled people to view them like art pieces at a gallery. This display included wreaths donated by Bridger Mechanical, Green River Valley Museum, Pinedale Chiropractic, ROLS Three Peaks Ranch (Mike Mann and Jeff Wohl) and Wind River Plaza. Bids from the Wind River Brewing Co. was also available to those at the fundraiser.



The Sublette County Historical Society/ Museum of the Mountain Man would like to give a big

# Thank You

for a fantastic Wreath & Chocolate Auction Evening!

**Our Sponsors:**  
First Bank of Pinedale

**Our Hosts:**  
Rendezvous Pointe

**Our Auctioneer:**  
Jay Fear

**Our Brew Masters:**  
Wind River Brewing Company

**Our Special Elves:**  
Dawn Sullivan, Jay Fear, Pinedale Brews, Ken Hartwig, Richard Brewster, Emma Lee Nelson, Terri Carr, Janet Montgomery, Sam Drucker, Randall Montgomery, Derek Carr, Annette Pope, Julie Lally, Billy Pope, Clint Garbist, Ronnie Wilson

**Our Top Buyers:**  
Maggie Miller, EnCana Natural Gas, Shell RMP and Ultra Resources

**Our Wreath and Chocolate Donors:**

Anderson, Sandy	Gibson, Jennifer	Reed's Ready Mix
Burn Door	Green River Valley Museum	Riley's Floral Shop
Big J's Auto Parts	High Mountain Real Estate	Rio Verde Engineering
Big Brothers/Big Sisters	Lakeside Lodge	Sage & Snow Garden Club
Bradley, Tammy	LaMere Concrete	S.A.E.W.
Brewer, Rosemarie	Lewis, Digger	Stell Rocky Mountain Power
Bridger Mechanical	McKenzie Mesquite Foundation	Snow, Melita - Truffles
Bryant, Peggy	Montgomery Land Trust	Storrs, Ritchie - Christmas Tree
Children's Discovery Center	Moore Country Quilting	Sublette Communications
Children's Learning Center	The Gayle McMurry Kinnison Memorial Wreath	Sublette County Library
Clean Wash Laundry	PI C.L.S./Three Peaks Ranch	Pinedale
Dennis Trucking Company	Olson, Karen	Regehr and Associates
Drucker, Sam	Pope, Annette	Ultra Resources
Earl, Ishi	Pope, Michelle	Wind River Plaza & Pasta/
EnCana Natural Gas	Pinedale Chiropractic	Castello Family
Fear Appraisals/ Jay Fear Real	Pinedale Preschool	Wohl's Pinedale Dodge
Lane Sublette Center Residents		



## Christmas Wreaths & Chocolates

The 18th Annual Christmas Wreath and Chocolate Auction, hosted by First Bank, drew a large crowd of people excited to bid on the unique items. Local groups and individuals donated the wreaths and chocolate baskets; proceeds benefit the Museum of the Mountain Man's 2012 projects and programs fund. Some of the high-value items drew upwards of \$600 during the live auction, and many were auctioned more than once.

"We were very pleased and thankful that many of the gas companies that bought the wreaths donated them back so that people could bid on them again," museum director Laurie Hartwig said. All of the wreaths and chocolate baskets sold during the evening, bringing a total of \$12,650 for museum projects and programs, almost \$2,000 more than last year. As part of its 2012 calendar, the museum plans to host the National Fur Trade Convention. "It was a great turnout and a festive evening," Hartwig said.

Andrew Setterholm photos



Jay Fear is the auctioneer for the evening, where the total proceeds climbed to \$12,650.



Clint Gilchrist shows off a wreath for the large crowd of bidders at the auction.



Sam Drucker presents one of the many creative and unique wreaths during the live auction at Rendezvous Pointe Friday.

The defendant reportedly told Terrell he wanted them "due to much of the area. Tyler noted there could be a chance, al-

December 9, 2011 Pinedale Roundup Page 13

THE SUBLETTE COUNTY HISTORICAL SOCIETY/ MUSEUM OF THE MOUNTAIN MAN WOULD LIKE TO GIVE A BIG

# Thank You

FOR A FANTASTIC WREATH & CHOCOLATE AUCTION EVENING!

<p><b>Our Sponsor:</b> First Bank</p> <p><b>Our Special Thanks:</b> Dawn Ballou Rosemarie Brewer Richard Brewer Sheryl Bessett Jon Bessett</p> <p><b>Our Top Buyers:</b> B&amp;B Candy, SWEET L. Sean &amp; Larra Vagts</p> <p><b>Our Wreath and Chocolate Donors:</b> Airport Automotive Big Brothers/Big Sisters Borwick, Rosemarie Cherry Wash Landscaping Dennis Trucking Company Drew Jers, Sam Carly, Juli Eriana Natural Gas/ Karen Olsen Evenhall, Sue Gunn's River Valley Museum High Mountain Real Estate Joko Hair Salon Johnson, Katherine Lakeland Lodge</p>	<p><b>Our Hosts:</b> Rendezvous Pointe</p> <p>Terry Cain Jack Cain Tim Cowland Sam Drucker Juli Coffy</p>	<p><b>Our Auctioneer:</b> Jay Fear</p> <p>Jay Fear Clint Gilchrist Ken Hartwig Annette Page Billy Page</p>	<p><b>Our Brew Meisters:</b> Wind River Brewing Company</p> <p>Mark Page Jackie Sell Gerrill Sell Lee W. Wood</p>
---	---	--	---

# 2011

The 18th Annual Wreath & Chocolate Auction was held on Friday, December 3, 2011 at Rendezvous Pointe in Pinedale. Jay Fear was auctioneer. The event was sponsored by 1st Bank. The event raised \$12,650 for the Museum.



# When a wreath is more than a wreath

Photos by Jean McGlaughlin



Above: Potential bidders could browse the wreaths during the social hour prior to the auction. Many people could be heard plotting as they eyed their favorite wreath and made plans to take it home.

Left: Auctioneer Jay Fear urged bidders into the holiday spirit at the annual wreath auction held at Rendezvous Pointe.

**PINEDALE** – Residents turned out in full force for the wreath auction held Friday night at Rendezvous Pointe. Bidding was sluggish to start, but it picked up as the night wore on and all the money raised went to the Museum of the Mountain Man.

The top seller of the night, donated by Sublette Insurance and Ann Fear Appraisals and made from an open bear trap, brought in \$600 from the Mountain Man Backcountry Horsemen Association. The coveted People's Choice award went to Lakeside Lodge's rustic driftwood wreath.

jeanmclaughlin@pinedale.com

**UNIVERSITY OF WYOMING  
OUTREACH SCHOOL**

**Troy L. Archuleta**  
Academic Coordinator

will be at the WYO OC Outreach Center  
Wednesday, December 19th,  
from 11:00 to 12:00  
Call the UW Outreach Center  
for an appointment.

Southwest Regional Center  
(307) 382-1817 • tarchuleta@uwyo.edu  
*We deliver the  
University of Wyoming  
to you!*  
Bachelor's Degrees • Master's Degrees  
Certificates • Endorsements

Our old friend  
**Dale "Raz"  
Rasmussen**  
is retiring this year.



## 2012

TUESDAY, DECEMBER 4, 2012 • SUBLETTE EXAMINER • PAGE 13

THE MUSEUM OF THE MOUNTAIN MAN'S  
Nineteenth Annual

## Wreath and Chocolate Auction

Friday, December 7 at 6 pm  
Holiday Reception at Rendezvous Pointe  
SPONSORED BY 1ST BANK.

Wreaths from individuals, businesses and organizations will be offered for sale during the festivities. Don't forget to purchase the creative and decadent chocolates too!

Jay Fear will use his excellent auctioning skills to sell to the highest bidder.

*Come and enjoy delicious hors d'oeuvres and beverages complimentary of 1st Bank.*

All proceeds benefit 2013 museum projects and programs.



**The Sublette County Historical Society/  
Museum of the Mountain Man would like  
to thank everyone for a successful Wreath  
and Chocolate Auction**

### OUR SPONSORS:

First Bank and Wind River Brew Pub

### OUR HOSTS:

Rendezvous Pointe

### OUR AUCTIONEER:

Jay Fear

### OUR ELVES:

Dawn Ballou	Billy Pape	Sam Drucker
Ken Hartwig	Bryant, Peg	Bev Sharp
Sheryl Boroff	Millie Pape	Juli Early
Jim Mitchell	Jack Cain	Sam Sharp
Jon Boroff	Geoff Sell	Jay Fear
Annette Pape	Terry Cain	Jamie Wood
Boone, Raina Pape	Jackie Sell	Clint Gilchrist

### OUR TOP BUYERS:

Des Brunette

Sean and Tamra Watts

### OUR WREATH AND CHOCOLATE DONORS:

Allen Agency  
Anderson, Sandy  
Back Country Horseman  
Bank of the West  
Bryant, Peg  
Boroff, Sheryl  
Chamber of Commerce  
Clean Wash Laundry and Dry Cleaning  
Dennis Trucking Co.  
Druckers, Chelene & Kate Johnson  
Druckers, Sam & Kate Johnson  
Early, Juli  
Erickson, John & Steve  
Kersall, Sue  
Jay Fear Real Estate  
Green River Valley Museum  
Hofler, Brenda  
Lake Country Builders  
Lakeside Lodge  
LaMere, Laurie  
The Learning Center  
Lutje, Nancy Norris  
McKenzie Menzies Foundation  
Obo's Market and Deli  
Pape, Annette  
Pape, Millie  
Pinedale Natural Gas  
Plus Street Florist  
Perry, Lenore  
Rendezvous Pointe  
Ridley's Floral  
Rio Verde Engineering  
Rocky Mountain Bank  
Sage & Snow Garden Club  
Seil, Geoff & Jackie  
Suvo, Melita  
Treffles  
Sublette Communications  
Sublette County Library  
Sublette Insurance and Ann Fear Appraisals  
Strom, Rickie - Christmas Tree  
Thomas, Angie  
White Mountain Operations  
Wind River Dental  
Wind River Pizza & Pasta  
Wind River Stone Scapes  
The Gayle Kinsman Memorial

### OUR BUYERS:

Troy Stephenson  
Millie Pape  
Troy Stephenson  
Martene Alexander  
Phil & Patti Washburn  
Carol White  
Rolie Sparrow  
Troy Stephenson  
Chris White  
Ken Hartwig  
Martha Pinnick  
Geoff & Jackie Sell  
Kayla Dibben  
Annette Pape  
Dawnita Griffith  
Jesse Early  
Sofia Wakefield  
Jim Gilchrist  
Sean & Tamra Watts  
Albert Sumner  
Clint Gilchrist  
Jamie Anderson & Kim Ervin  
Peg Weber  
Sophia Wakefield  
Larry McGlaughlin  
Clint Gilchrist  
Chris White  
Bob & Rose Lopez  
Jon Boroff & Ken Kautsky  
Ken Hartwig  
Chris White  
Linda Schumacher  
Jay Fear  
Linda Schumacher  
Clint Gilchrist & Dawn Ballou  
Peg Bryant & Peg Weber  
Rebecca Kruger  
Dawn Ballou  
Des Brunette  
Jay Fear  
Cheryl Estinger  
Prague Harrell  
Geoff & Jackie Sell  
Rayanne Jensen  
Chris White  
Sean & Tamra Watts

**The 19th Annual Wreath & Chocolate Auction** was held on Friday, December 7, 2012 at Rendezvous Pointe in Pinedale. Jay Fear was auctioneer. The event was sponsored by 1st Bank. Over 50 wreaths were donated. Lakeside Lodge's driftwood wreath was picked as "People's Choice."





greeted Sublette County residents during the cocktail and appetizers hour the auction started.



Sam Drucker looks through the opening in a wreath as he brings it in for close inspection.



Some wreaths were less traditional. Clint Gilchrist walked around the Lovatt Room with a Native American-inspired nativity scene with an evergreen manger.

Right: Clint Gilchrist makes laps around the room with a burlesq wreath as Santa looks on to make sure residents are donating.

Below: Santa welcomes guests and introduces Laurie Harberg, the executive director of the museum.



Jay Fear uses his talents to auction off all of the wreaths and drive bids high.

In addition to donating his time to the auction, Sam Drucker donated a woolly bugger stocking, which will surely bring delight to a Sublette County fisherman on Christmas morning.



## WHO SAID WREATHS NEED TO BE BALSAM?

Photos by Kathy Carlson

PINEDALE—The Mountain Man held its annual wreath and chocolate auction last Friday evening in the Lovatt Room of the Sublette County Library in Pinedale. The event features wreaths made by people and organizations throughout Sublette County, including some very creative takes on the old standard. Proceeds for the auction will help fund the museum and its educational programs in the county.



# 2013



Julie Early hugs her granddaughter and keeps her from raising her tiny hands to bid on the wreaths. Early donated a bearded wire Christmas tree complete with red ornaments to the auction this year.

Karen Olson raises her bid card high above her head to get the attention of the auctioneer. She bid on several wreaths that evening.



## THE SUBLETTE COUNTY HISTORICAL SOCIETY & MUSEUM OF THE MOUNTAIN MAN

WOULD LIKE TO THANK EVERYONE FOR THE SUCCESS OF OUR  
**20th Annual Wreath & Chocolate Auction**  
 SPONSORED BY FIRST BANK  
 REFRESHMENTS BY WIND RIVER BREWING  
 YOUR GENEROSITY HELPS SUPPORT THE 2014 PROGRAMS & PROJECTS

**WREATH DONORS:**  
 Allen Agency Real Estate  
 Melody Ames  
 Anna Bear Apartments  
 Peggy Bryant  
 Children's Learning Center  
 Dennis Trucking  
 Sam Drucker  
 Julie Early  
 Gayle McMurry Memorial  
 Wreath  
 Green River Valley Land Trust  
 Green River Valley Museum  
 High Mountain Real Estate  
 Jay Fear Real Estate  
 Lakeside Lodge  
 Log Cabin Motel  
 Nancy Little  
 Main Street Pinedale  
 McKenzie Menzies  
 Foundation

Mountain Man Backcountry  
 Mountain  
 Old's Market & Deli  
 Office Outlet  
 Pine Street Hotel  
 Pinedale High School  
 Pinedale Fire Dept Council  
 Rio Verde Engineering  
 Sage & Snow Garden Club  
 Sherry (Dayton) Snyder  
 Sublette County Chamber of  
 Commerce  
 Sublette County Library  
 Sublette County Rural Health  
 District  
 Sublette Insurance  
 Wind River Bank  
 Wind River Brewing  
 Wind River Dental  
 WLC Engineering

**SILENT BID DONORS:**  
 Dawn Ballou  
 Cadeau River Ceramics  
 Jo Crandall  
 Davidson Den  
 Sam Drucker  
 Pardee Sashier & Son  
 Lake Country Builders  
 Log Cabin Motel  
 B&B of Annette Page  
 Melita Snow  
 Sublette Communication  
 Sublette County SAFV Task  
 Force  
 Angie Thomas  
**WREATH BUYERS:**  
 Elz Artstation-McDonald  
 B&B P's  
 Peg Carney  
 Chambers House Bed &  
 Breakfast  
 Cowboy Shop

Rita Donahay  
 Jana & Jesse Early  
 Ericana  
 James & Dorothy Gehlbauer  
 Gary Hardman  
 Ken Hartman  
 JB's Welding & Excavation  
 Mark & Maria Kille  
 Madeline Lesicki  
 Regi Lester  
 Phyllis McCullough  
 Rio Verde Engineering  
 Geoff & Jackie Sell  
 Jonita Sommers  
 Albert Sommers  
 Timia Waters  
 WLC Engineering  
**HOSTS:**  
 Sublette County Library  
**AUCTIONEER:**  
 Jay Fear

**SPONSORS:**  
 First Bank  
 Wind River Brewing  
**VOLUNTEERS:**  
 Dawn Ballou  
 Jon Bonoff  
 Sherry Bonoff  
 Peg Bryant  
 Terry Cain  
 Lynn Cameron  
 Sam Drucker  
 Julie Early  
 Jay Fear  
 Clint Gilchrist  
 Jim Mitchell  
 Annette Page  
 Billy Ryan  
 Mike Powell  
 Geoff Sell  
 Jackie Sell

The 20th Annual Wreath & Chocolate Auction was held on Friday, December 6, 2013 in the Lovatt Room of the Pinedale Library. Jay Fear was auctioneer. The event was sponsored by 1st Bank. Catering was by Sue Eversull & Wind River Brewing. American Mountain Man, Mike Powell, came as Santa Claus.



Right: At the craft fair, many different items were on sale, from baked goods to natural health products.

Below: Before the auction, guests took part in a silent auction where chocolate and sweets could be bought.



Right: The event was extremely well attended, with much of the food running out and additional seating being needed.



Above right: The fair caused the shutdown of the whole front part of the Pinedale Aquatic Center and was visited by Santa later in the afternoon.



Executive Director of the museum Laurie Hartwig introduced auctioneer Jay Fear.

Right: Jay Fear ran the evening's auction, ensuring the wreaths got very high prices.



Like the wreaths, many of the treats had been donated by local businesses, and some offerings went for more than \$100.

Below right: The event ran all afternoon and evening, with many visitors stocking up on presents.



Food at the event was prepared by Russ Eversull and included both seasonal and other popular dishes.

Top left: Many products at the market were handmade and were from local artisans.

## Festive spirit comes to Sublette County

Photos by Neil Cameron

**PINEDALE** - Over just weekend, two events marked the beginning of the Christmas season in Pinedale. The Museum of the Sublette Man held its annual chocolate and wreath auction at the Sublette County Library in Pinedale. And at the Pinedale Aquatic Center, there was the annual Farmers Market in which locals sell crafts and food to residents. Santa also came to visit both at the market.

www.pinedaleroundup.com

# Thank you

FROM THE MUSEUM OF THE MOUNTAIN MAN

<p><b>Our Sponsor:</b></p> <p><b>Our Host:</b> Pinedale Library</p> <p><b>Our Auctioneer:</b> Jay Fear</p> <p><b>Our Elves:</b> Dawn Ballou Sheryl Boroff Jon Boroff Peg Bryant Terry Cain Lindsey Collis Julie Early Aaron Fandek Jay Fear Clint Gilchrist Ken Hurtwig Corey Henry</p>	<p>Nicole Henry Annette Pape Billy Pape Aaron Sechafer Mindy Sechafer Geoff Sell Jackie Sell Bev Sharp Sam Sharp Brent Thomas Jamie Wood Wind River Brewing Co.</p> <p><b>Our Top Buyers:</b> Jonah Energy Chocolate and Silent</p> <p><b>Auction Donors:</b> Dandyon Den First American Title Insurance Co. Clint Gilchrist Pape, Annette Rapid Wire, LLC</p>	<p>Snow, Melita - Truffles Sommers Homestead</p> <p><b>Volunteers:</b> Dawn Ballou, Elaine Crumpley &amp; Sam Drucker</p> <p><b>Our Wreath Donors:</b> Allen Agency Real Estate Altitude Drug Andrews, Gene &amp; Connie Bryant, Peg &amp; Lurch, Mary Ana Cowboy Shop Dennis Trucking Co. Drucker, Sam Early, Julie Jay Fear Real Estate Halliburton Lakeside Lodge McKenzie Meningitis Foundation Montana Metalworks, Emily Dillon &amp; Joe Newman Mountain Man Back Country Horseman</p>	<p>MMM Front Desk Staff Obo's Market and Deli Pape, Fred &amp; Michelle Pape, Millie Pinedale Dental Rio Verde Engineering Rocky Mountain Bank Ryckman, Hayley - Stained Glass Sundays Sage &amp; Snow Garden Club Sell, Geoff &amp; Jackie Sorenson, Natalie Strube, Don Sublette County UW Extension Sublette County Library - Pinedale Sublette Insurance VPW Wind River Dental Wind River Stone Scapes The Gayle Kinnison Memorial Wreath</p>
---	--	--	---

# 2014

The 21st Annual Wreath & Chocolate Auction was held on Friday, December 5, 2014 in the Lovatt Room of the Pinedale Library. Jay Fear was auctioneer. The event was sponsored by 1st Bank and Wind River Brewing.





The Pinedale Library's Lovatt Room is filled with community members who came to show their support for the Museum of the Mountain Man.



Wreaths of every shape and style are auctioned off to raise funds for the Museum of the Mountain Man.

## Wreaths raise MMM funding

**PINEDALE**—Wreaths of all shapes and sizes were auctioned off last Friday, Dec. 4, at the 22nd annual Museum of the Mountain Man Christmas Wreath and Chocolate Auction in the Lovatt Room of the Pinedale Library.

Homemade wreaths and items from local donors were auctioned to benefit the Mountain Man and the Sublette County Historical Society. Spectators said the average donation was lower than in recent years, with wreaths topping out at \$500 that would previously have sold for thousands of dollars. Though this meant fewer overall dollars raised, it also meant average Joe's could show their support and take home a wreath.

The big sellers were Julie Early's wreaths, and of course, the Gayle McMurry Kinnison memorial wreath.

*Ben Ramsey photos*



Ken Marincic (left) holds up the next wreath as auctioneer Jay Fear (right) takes bids.



Ken Marincic, board member of the Sublette County Historical Society, auctions off a homemade wreath.



Dave Noble throws up his hand in a bid.



THE MUSEUM OF THE MOUNTAIN MAN'S  
23rd Annual

# Wreath and Chocolate Auction

Friday, December 2 at 6 pm

Sublette County Library in Pinedale

Wreaths from individuals, businesses and organizations  
will be offered for sale during the festivities.  
Silent auction featuring chocolate and gift baskets.

Jay Fear will use his excellent auctioning  
skills to sell to the highest bidder.

*Food is generously sponsored by 1st Bank.*

All proceeds benefit 2017 museum programs and exhibits.  
Thank you for supporting the Museum of the Mountain Man.




The 23rd Annual Wreath  
& Chocolate Auction was  
held on Friday, December 2,  
2016 in the Lovatt Room of  
the Pinedale Library. Jay Fear  
was auctioneer. The event was  
sponsored by 1st Bank.

## 2016

*It's the Season to Say*

# THANKS!



*The Museum of the Mountain Man  
would like to thank the following  
sponsors for making the 23rd  
Annual Wreath and Chocolate  
Auction a success. We couldn't have  
done it without your support.*

<b>Our Sponsors:</b>	Brent Thomas	Green River Valley
1st Bank	Roh Tolley	Museum
County Lane Liquor	Jamie Wood	Jackson Fork Ranch
<b>Our Host:</b>	<b>Our Top Buyers:</b>	Jay Fear Real Estate
Pinedale Library	Jonah Energy	Dale Jensen
<b>Our Auctioneer:</b>	Zane & Chris White	Jonah Energy
Jay Fear	Dave & Julie Kappenman	Lakeside Lodge
<b>Our Caterer:</b>	<b>Chocolate &amp; Silent</b>	Nancy Lutfje
Sue Eversull Catering	<b>Auction Donors:</b>	Mountain Man Back
<b>Our Elves:</b>	John & Jamie Anderson	Country Horsemen
John Anderson	Mindi Crabb	Ruth Noble
Dawn Ballou	Office Outlet	Obo's
Travis Bing	Annette Pape	Office Outlet
Jon Boroff	Pinedale Aquatic Center	Millie Pape
Sheryl Boroff	Pinedale Half Marathon	Ridley's
Julie Early	Proactive Rehabilitation	Rio Verde
Jay Fear	and Fitness	Engineering
Jim Gehlhausen	Rapid Wire, LLC	Rural Health Care
Clint Gilchrist	Aaron & Mindy Seehafer	Foundation
Ken Hartwig	Melita Snow	Sage & Snow
Laurie Hartwig	Sommers Homestead	Garden Club
Ken Marincic	<b>Wreath Donors:</b>	Natalie Sorensen
Jeness Saxton	Peggy Bryant & Mary Lurch	Stained Glass Sundays
Aaron Seehafer	Cowboy Shop	Don Strube
Mindy Seehafer	Dennis Trucking	Sublette Examiner
Sandy Smith	Sam Drucker	Pinedale Roundup
	Julie Early	Sublette Insurance
	Gayle Kinnison Memorial	White Mountain
		Operating



# Pinedale Roundup

Newspaper of the Upper Green River Valley, Est. 1904

DECEMBER 8, 2017

75 Cents

## 2017

**The 24th Annual Wreath & Chocolate Auction** was held on Friday, December 1, 2017 in the Lovatt Room of the Pinedale Library. Jay Fear was auctioneer. The event was sponsored by 1st Bank.



Jon Boroff holds White Mountain's wreath as Jay Fear prepares to auction it off Dec. 1 at the Museum of the Mountain Man fundraiser. For additional photos and information, see page 9 of today's Pinedale Roundup.

## Wreath Auction benefits museum



Julie Early can't wait to give this perky snowman wreath to her mother Edna Swain.



Trudy and Casey Doak walked away with armfuls of holiday decorations after last year's wreath auction.

## Get a head start on holiday spirit

By Joy Ufford

jufford@pinedaleroundup.com

**PINEDALE**—This coming weekend is filled with several anticipated events that help bridge the gap to Christmas morning.

Tonight—Friday, Dec. 1—the Museum of the Mountain Man hosts its 25th annual Christmas Wreath & Chocolate Auction. Businesses and creative individuals create several dozen festive wreaths, swags, centerpieces and gourmet chocolate treats that will go up for bid, both silent and live.

Decorations range from western gear to trape, antlers to ice skates and birdhouses to cowboy boots.

The auction will be running in the Pinedale Library's Lovatt Room, starting at 6 p.m. and run until 9 p.m. The last offering will be the traveling wagon-wheel wreath first introduced by Gayle McMurry Kinnison, which is refreshed for a new owner, who will bring

it back for next year's wreath auction.

The event, with host and guest auctioneer Jay Fear, is always on the first Friday in December. It is the Sublette County Historical Society's main fundraiser and supports the museum's upcoming 2018 events and programs.

On Saturday, Dec. 2, Santa will hold court, 10 a.m. to 4 p.m., again in the Pinedale Library's Lovatt Room, for families to come and take pictures in time to use them for holiday cards. A photographer will be on hand for a fee.

On Sunday, Dec. 3, Main Street Pinedale hosts its annual Winter Holiday Market in the Lovatt Room, from 10 a.m. to 4 p.m. Part indoor farmer's market and part crafts fair, vendors set up tables to offer crafts, lotions, baked goods, gifts and much more.

The Pinedale Library is located at 155 S. Tyler Ave. and the Lovatt Room lobby entrance is at the corner of Tyler Avenue and Charles Street. ■

December 1, 2017 Pinedale Roundup Page 7



Julie Early's sagebrush 'horsehead' wreath was voted the people's favorite at last year's Museum of the Mountain Man Wreath & Chocolate Auction.

## Small Business Saturday draws lots of shoppers

**PINEDALE**—Shoppers descended Nov. 25 on downtown Pinedale and 27 participating businesses for the third annual Small Business Saturday and 2nd Annual Poker Run.

The Sublette Chamber of Commerce hosted an afterparty, where shoppers compared poker hands and receipts.

Tara and Josh Adams won the Top Spender award, collecting receipts of \$1,921 for their day's purchases.

Sabrina Guy won the Best Poker Hand Award with two pairs.

Kelly Karr was the biggest loser, winning the Worst Hand Award.

Jeanne Davis won the Social Media Award, posting the most selfies on the Facebook page.

Another 14 people were given raffle prizes. ■

The Sage & Snow Garden Club's willow planter won "People's Choice." Over \$10,000 was raised in the event.

The Gayle McMurry Kinnison Wreath was retired, having brought in over \$15,000 through the years.





Madeleine Murdock looks over the chocolates and other silent auction goodies.

## Christmas Wreath & Chocolate Auction earns \$10,000 for museum

By Joy Ufford

jufford@pinedaleroundup.com

**PINEDALE** – The Museum of the Mountain Man's annual fundraiser brought an appreciative audience Friday, Dec. 1, that bid on a wide range of Christmas centerpieces and wintertime wreaths to handmade embossed chocolates and homemade fudge.

Auctioneer Jay Fear took competitive bids for several dozen festively decorated traditional wreaths of greens and grapevines, birdhouses, milk cans, a mini hay-filled sleigh with a vintage team, horseshoes and horse collars, antlers, stained glass and even a "pollinator beehive" made from spiraling rope.

Sage and Snow Garden Club's willow planter grabbed the most votes as "people's choice" and Julie Early, who has made a wreath every year for the past 14, gathered lush greens and ribbons for the second favorite on display in the Lovatt Room.

The garden club's planter was auctioned off several times as buyers donated the lovely piece back for resale, as did a number of other wreath buyers.

One longtime tradition – of the Gayle McMurry Kinnison wagon wheel wreath – was retired Friday after years of being sold and brought back to benefit the Sublette County Historical Society and museum programs.

"This wreath has brought more than \$15,000 through the years," said society director Clint Gilchrist. "Gayle meant a lot to this institution and it's meant a lot to us."

He also announced that the museum is planning its second annual Western Art & Wine Auction summer fundraiser next year, during the annual Mountain Man Rendezvous in July.

Gilchrist said more than \$10,000 was raised at this year's wreath and chocolate auction.

He said 43 wreaths or chocolates were donated for the event and 31 bidders made sure everything sold, with some bidders buying multiple items. ■



Toni Brown's donation is a miniature hay-filled sleigh with a vintage team and driver.

## Museum of the Mountain Man 24th Annual Wreath & Chocolate Auction



Would like to thank the following for making this year's auction such a success!

**Sponsor**

1st Bank

**Auctioneer**

Jay Fear

### Top 3 Buyers

Jonah Energy • Dennis Trucking • Bank of Sublette County  
**Buyers**

John & Jami Anderson • Bighorn Quality Construction • Josie Brown • Jon & Trudy Doak • Julie Early • Jim & Dereth Gehlhausen • Clint Gilchrist • Greenwood Law Office • Retta Hudlow • Jack Hunter • Ken Konicek • Maggie Miller • Janet Montgomery • Obo's Market • Annette Pape • Millie & Raina Pape • Norm & Barb Pape • Pitchfork Fondue • Albert Sommers • Jonita Sommers • The Den • Maike Tan • Nicole Thiele • Rob & Nancy Tolley • Joy Ufford • Sandy Wanfalt • Brittany White • Zane & Chris White • Larry Zuckerman • Hort & Juli Spitzer

### Wreath & Chocolate Donors

Meg Alley • Mellisa Anderson • Bighorn Quality Construction • BOCES #1 After School Program • Bomgaars Supply • Toni David • Dennis Trucking • Sam Drucker • Julie Early • Jim & Dereth Gehlhausen • Green River Gear • Green River Valley Museum • Green River Valley Program • Interior Design and Visual Arts 4H Group • Jay Fear Real Estate • Jonah Energy • Lineback Design • Moose Creek Catering • Mountain Man Back Country Horseman • Northern Title Company • Obo's Market & Deli • Office Outlet • Annette Pape • Millie Pape • Pinedale Aquatic Center • Pinedale Roundup • Yvonne Primanis • Rio Verde Engineering • Rural Health Foundation • Sage & Snow Garden Club • Jeness Saxton • Quade Saxton • Aaron & Mindy Seehafer • Bev Sharp & Rachael Miller • Sandy Smith • Melita Snow • Sherry Snyder • Stained Glass Sundays • Don Strube • Sublette Examiner • Rob & Nancy Tolley • Triple Peak Lodge • White Mountain Operating

### Helpers

Jami Anderson • John Anderson • Dawn Ballou • Travis Bing • Jon Boroff • Sheryl Boroff • Julie Early • Jay Fear • Dereth Gehlhausen • Jim Gehlhausen • Jon Gibson • Clint Gilchrist • Ken Marincic • Casey Saxton • Jeness Saxton • Aaron Seehafer • Mindy Seehafer • Sandy Smith • Nancy Tolley • Rob Tolley • Betsy Watry • Jamie Wood

MUSEUMOFTHEMOUNTAINMAN.COM



PINEDALE, WYOMING  
700 EAST HENICK • 307-367-4101

**The 25th Annual Wreath & Chocolate Auction** was held on Friday, December 7, 2018 in the Lovatt Room of the Pinedale Library. Jay Fear was auctioneer. The event was sponsored by 1st Bank.