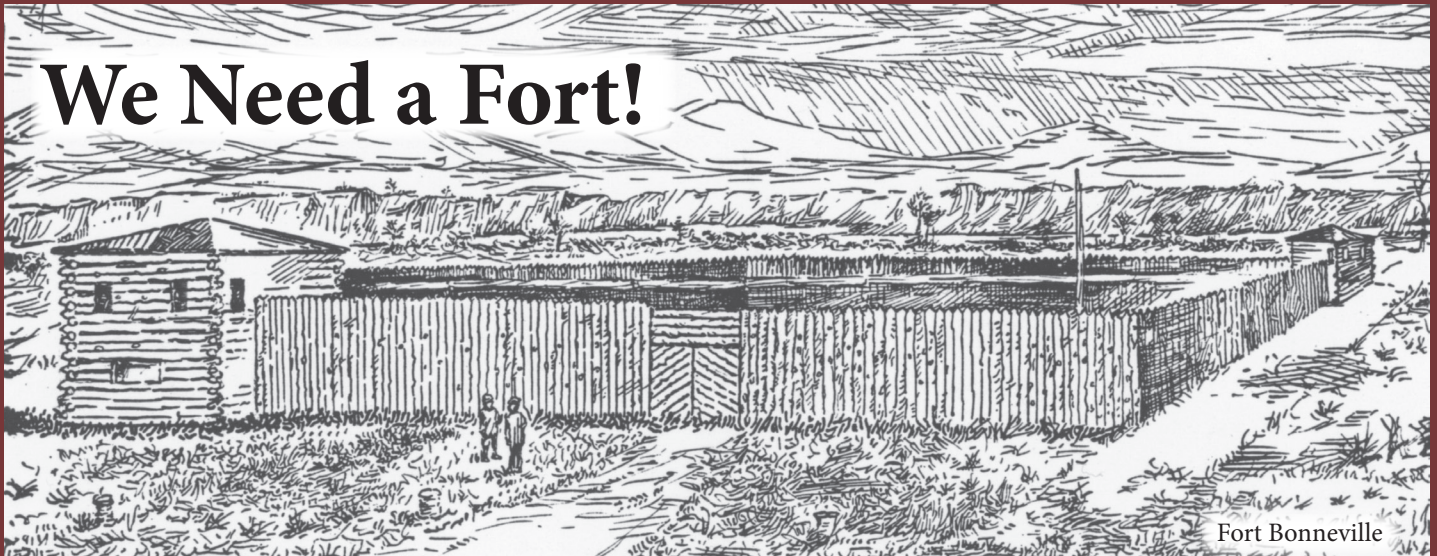


We Need a Fort!

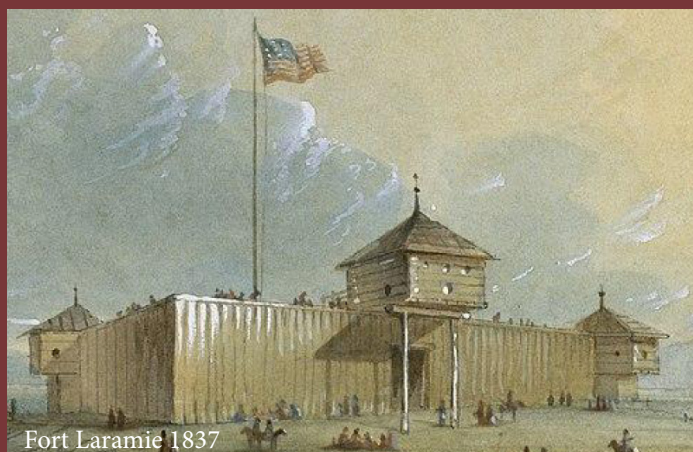


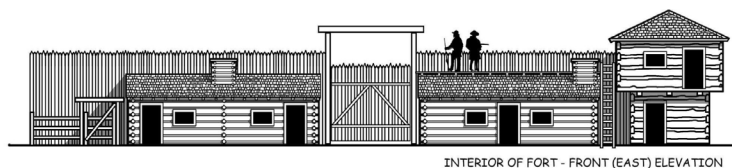
Fort Sublette - *Bringing History Alive*

Expanding on our 23-year partnership with the American Mountain Men (AMM), Fort Sublette will be constructed on the north lawn of the Museum grounds. The stockade will be built with log walls. It will have two story block houses, interior cabins, and Bourgeois house. It will include an authentic trade room where museum visitors can barter for trade goods. This will be an 1830s fort based on period forts such as Fort Bonneville, Fort Laramie, Fort Hall, Fort Union, Bent's Fort, Fort Osage.

Living History

- Living history all summer long for 10,000 visitors
- Partner with American Mountain Men
- 100 x 100 ft, stockade
- 1830s Fort based on known period forts
- Authentic trade room, demonstrations in black smithing, beaver trapping, hide tanning, clothes, tool making, firemaking, beaver fur press, fort living, and more



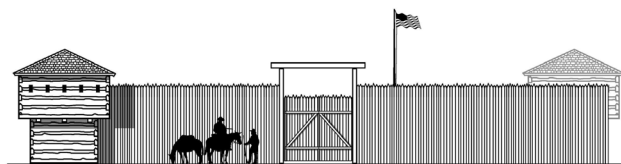
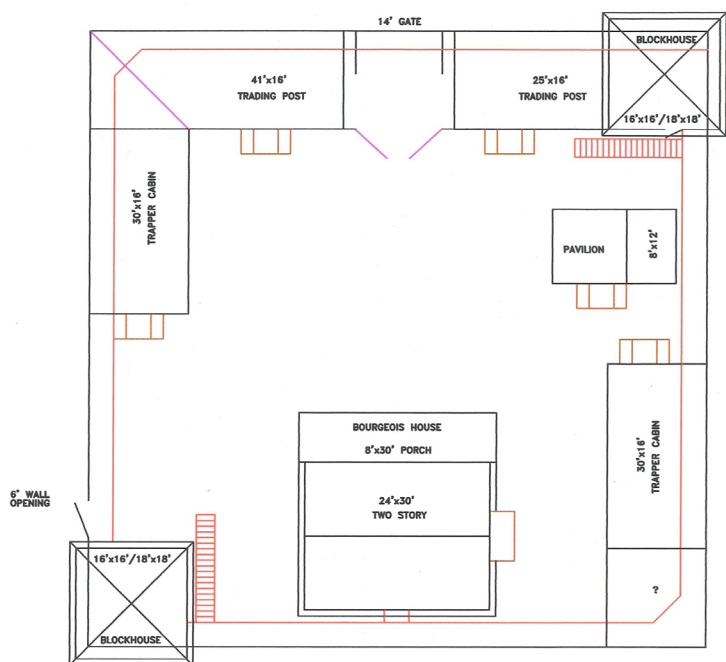


INTERIOR OF FORT - FRONT (EAST) ELEVATION



INTERIOR OF FORT - BACK (WEST) ELEVATION

Fort Sublette Conceptuals



Fort Sublette Conceptual



Beaver Fur Press Demonstration



Fire Starting Demonstration



AMM Encampment

For more information, contact the Museum of the Mountain Man, 307-367-4101, director@mmmuseum.com.

